

KEY FIGURES

CURRENT REPORTING PERIOD

 IOM managed PoE sites conducting COVID-19 screening
1

 Individuals screened for COVID-19 at IOM operated PoE sites
10,384

 Total confirmed cases of COVID-19 in South Sudan
4,609

 Number of recoveries of COVID-19 cases in South Sudan
3,692

 Total COVID-19 deaths in South Sudan
66

HIGHLIGHTS

- 01** 347,133 individuals reached through COVID-19 awareness and hygiene promotion sessions held at water points and through house to house campaigns.
- 02** IOM MHPSS teams reached 10,110 beneficiaries with key messages on MHPSS considerations during COVID-19.
- 03** IOM Core Pipeline provided two partners with WASH supplies and processed two requests for PPE supplies.



SITUATION OVERVIEW

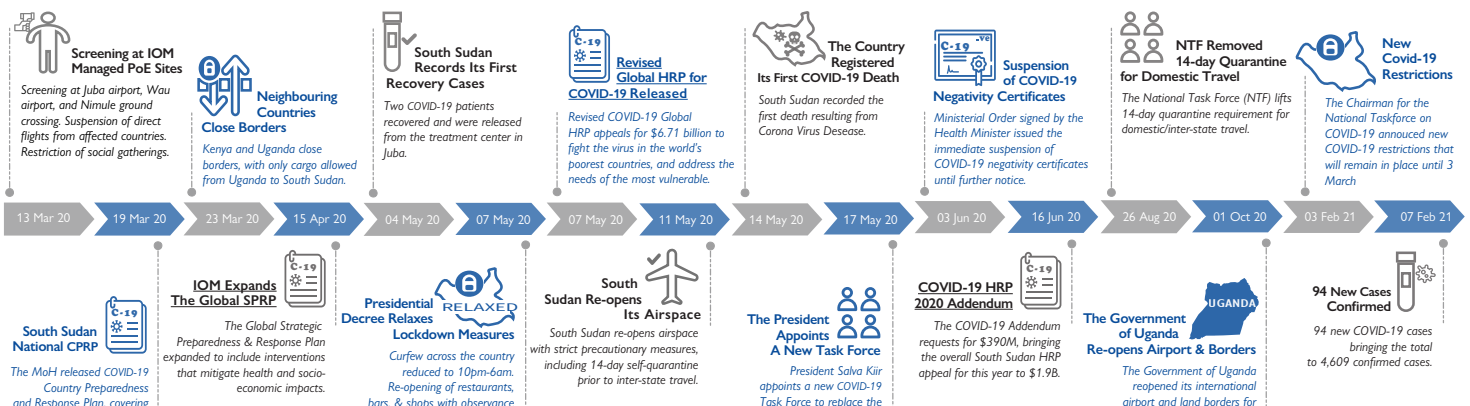
Public health systems continue to come under strain due to the unprecedented COVID-19 pandemic, with total numbers of infected individuals reaching 105 million cases and over 2 million deaths globally since the start of the pandemic (WHO Global Epidemiological Update, 9 February 2020).

According to WHO, For the fourth week in a row, the number of new cases reported fell globally, with 3.1 million new cases last week, a 17% decline compared to the previous week. The number of new deaths reported also fell for a second week in a row, with 88,000 new deaths reported last week, a 10% decline as compared to the previous week. All WHO regions reported a decline in new cases, with five out of six regions reporting more than 10% decreases.

In the past week, over 84,000 new cases were reported in the African region, a 22% decrease compared to the previous week, and over 3,200 deaths, a 30% decrease from a week earlier. South Africa reported the highest number of new cases (24,464 new cases; 1.2 new cases per 100,000), according to WHO.

South Sudan continues to see a rise in the number of confirmed cases, with 4,609 confirmed cases, 3,692 recoveries, and 66 deaths, as of 7 February 2021. The National Taskforce on COVID-19 in South Sudan announced new COVID-19 measures to curb the spread of the virus on 3 February, including the closure of schools, ban of all social gatherings, closure of businesses that attract crowds, and provisions to ensure non-essential staff do not go to work in both the private and public sector. These restrictions will remain in place until 3 March 2021.

COVID-19 TIMELINE IN SOUTH SUDAN



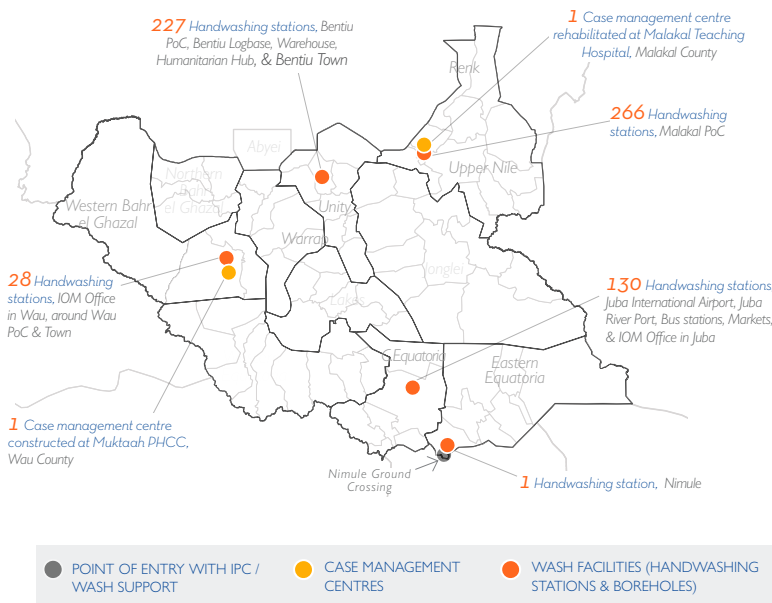
PREPAREDNESS & RESPONSE

INFECTION PREVENTION & CONTROL



IOM donates critical PPE's for health workers at Juba International Airport © IOM 2021 / PUTSOA Liatile

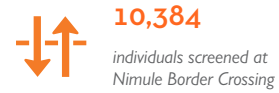
- In Juba, 17 of the 18 handwashing facilities (HWF = 1000L) built by IOM remained operational (Juba Bus Station, Juba River Port, Konyo Konyo Market, JIA-A, JIA- C, Jebel Market, Gabat River Port, Gumbo Owino market, Shirikat Taxi Terminal, Custom Bus Terminal, Juba University B and C, Juba Teaching Hospital, Shirikat Kampala Bus Park, Lologo II – New Market, and Gumbo Police Station), benefiting 92,044 individuals (24,843 girls, 23,958 boys, 22,082 women, 21,161 men). In addition, out of the 94 handwashing stations (HWS = 500 L) built by IOM in Juba, 88 remained operational during the reporting period. The handwashing stations benefited 179,936 individuals (48,582 girls, 46,784 boys, 43,184 women, 41,386 men) during the reporting period¹.
- In Juba, the upgrading of the three borehole systems is ongoing in Lemon Gaba, Joppa Block 1, and Nesitu.
- In Wau, one handwashing facility was handed over to St. Daniel Comboni Church Administration. The handover package included one pack of soap, containing 25 bars. As of this reporting period, all 16 HWFs in Wau have been handed over to the community for continued care and maintenance.
- In Nimule, two out of the three HWS built remained fully operational, benefiting 9,106 individuals (2,094 men, 2,186 women, 2,458 girls, 2,368 boys)².
- IOM maintained 652 handwashing stations, as follows:



^{1,2} Based on WASH Cluster standard of water usage (2L/day/person) and gender/age disaggregated percentage

POINTS OF ENTRY

- IOM continued COVID-19 screening at Nimule Ground Crossing. In addition, IOM provided IPC/WASH support to Nimule PoE, including the supply of clean water through water trucking, rehabilitation and maintenance of sanitation facilities, construction and installation of handwashing facilities, and supply of IPC materials, such as face masks, soap, and hand sanitizers.
- Arrival and departure screening for COVID-19 was conducted at Nimule Ground Crossing, reaching a total of 10,384 travellers.



MOBILITY

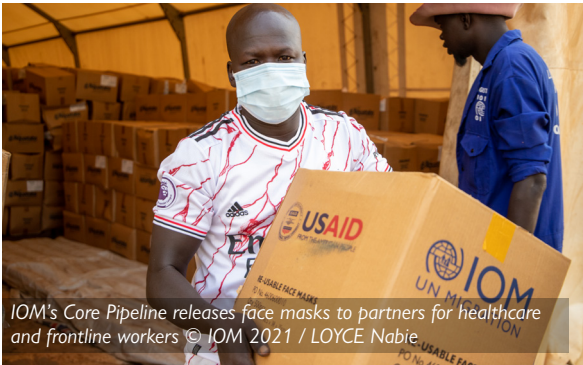


Flow monitoring at Malakal port: family enroute to Renk due to flooding in their village © IOM 2021 / THABO Nyago

- Based on data submitted by 7 February 2021, which includes 18 out of 32 flow monitoring points at the country's borders, internal transit hubs, and displacement sites, DTM enumerators carried out 2,266 interviews, representing 7,022 individual movements. Through the flow monitoring registry, DTM surveys people on the move at key transit points within South Sudan and at its borders. Data provides an insight into mobility trends, migration drivers, and traveler's profiles. Click [here](#) for the latest public dashboard. In addition, DTM continued operating four displacement site flow monitoring points at the gates of Naivasha IDP camp (former Wau PoC AA), Masna collective centre, Bentiu PoC, and Malakal PoC site. During this reporting period, 770 interviews were conducted at three out of the four sites, representing 2,632 individual journeys in to / out of the sites.
- Due to programmatic re-prioritization, DTM South Sudan changed the frequency of remote weekly assessments of COVID-19 mobility restrictions and response measures to monthly. Therefore, no updates are available for this reporting period

PIPELINE

- IOM Core Pipeline supported two partners for integrated WASH and COVID-19 response and prevention activities in Masna and Naivasha IDP sites, Western Bahr el Ghazal, and Maiwut, Upper Nile. Critical WASH items were released to support approximately 5,255 households, including soap, buckets, filter cloths, and water purification tablets (Aquatabs).
- IOM Core Pipeline also processed requests for two partners to provide personal protective equipment (PPE) supplies to healthcare and frontline workers, supporting critical COVID-19 infection, prevention, and control.
- During the reporting period, IOM coordinated with the S-NFI Custer to release 4,000 reusable face masks to one partner to support approximately 2,000 households in Twic East, Jonglei.



IOM's Core Pipeline releases face masks to partners for healthcare and frontline workers © IOM 2021 / LOYCE Nabie

RISK COMMUNICATION & COMMUNITY ENGAGEMENT

- IOM continues to mainstream COVID-19 response and prevention into humanitarian, recovery, resilience, and development programming.
- COVID-19 awareness and hygiene promotion activities continued to communities at Bentiu and Malakal PoCs, as well as in Juba, Jur River, Nimule, and Wau. Risk communication and awareness messages on COVID-19 continued to be disseminated through a network of 273 Community Hygiene Promoters (CHPs) working across the country, reaching 347,133 individuals (93,497 men, 103,459 women, 76,485 boys, 73,692 girls, including 17,341 PSNs), with key messages, including signs and symptoms and prevention measures, all aligned with the Risk Communication and Community Engagement Technical Working Group guidance.
- IOM continued disseminating COVID-19 related radio messages, combined with protection, gender equality, and GBV mainstreaming through City FM 88.4. The 25th radio talk show was held on 4 February 2021 on COVID 19 and improving community attitudes towards hygiene and sanitation, with experiences shared by community hygiene promoters. The main guests were two CHPs volunteers (1 woman, 1 man) who have been trained and engaged by IOM during the COVID-19 response.
- During this reporting period, IOM also observed COVID-19 preventive measures at its handwashing points across Juba. Out of the 14,021 individuals (7,520 men, 6,501 women) observed to pass by the handwashing facilities, on average, 48% washed their hands, while 35% were wearing a face mask. This exercise was conducted in four public places (market, hospital, Nimule POE, and bus station), at which IOM is currently implementing COVID-19 related activities.
- In Malakal, Bentiu, and Wau, IOM MHPSS teams continued to hold COVID-19 risk communication and awareness raising sessions, reaching 10,110 beneficiaries with key messages on MHPSS considerations during COVID-19, aimed at behavioural change while tackling misinformation.
- IOM MHPSS teams also continued to support the Regional Hotline for MHPSS in Western Bahr el Ghazal and Upper Nile, providing emotional support for 49 individuals experiencing personal challenges, such as unemployment, domestic violence, and loss of loved ones.

COORDINATION NOTES

- Active participation in various EVD/COVID-19 fora continued, including the Strategic Advisory Group, National Task Force, COVID-19 National Steering Committee meetings, Technical Working Groups, and State Task Forces.
- Participation in the Inter-Cluster Coordination Group (ICCG) with OCHA, partners, and other stakeholders.
- IOM continued its participation in the Needs Analysis Working Group (NAWG), a key platform that provides decision-makers (ICCG) and responders with data and analysis on impact and needs to help priorities response based on identified needs.
- Under the IPC/WASH TWG, IOM continued to take the lead in the Sub-Committee on IPC/WASH in Communities and Camp-like Settings. IOM also continued to actively participate in the WASH Cluster EPnR Technical Working Group to coordinate the ongoing COVID-19 response in Juba.
- Through support from the Central Emergency Response Fund, IOM's four partners continued health and WASH initiatives to prevent the spread of COVID-19. International Rescue Committee, operating in Rubkona County, and Medair, operating in Juba County, conducts health and WASH activities. In Yei County, Torit, and Nimule, the Norwegian Refugee Council conducts WASH activities, while United Networks for Health conducts health activities in the same locations. The programming is set over nine months.



IOM facilitates training with humanitarian partners in Mangalla © IOM 2021 / VISUALS Aleon

IOM's COVID-19 response activities are supported by:

