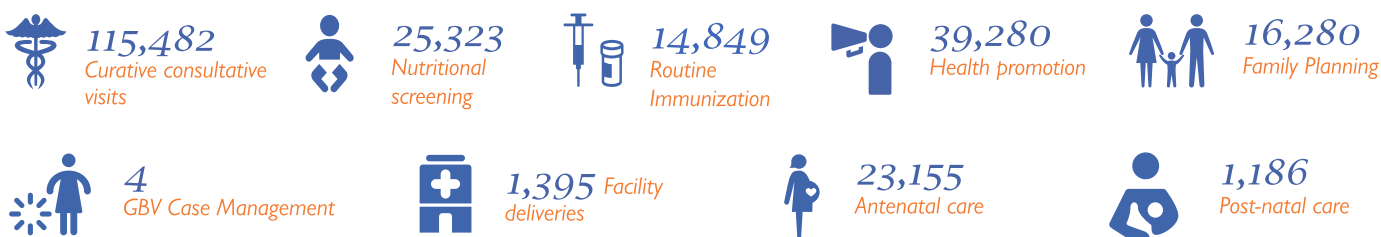




IOM community midwife providing Sexual Reproductive Health Education at the IOM Sector 3 clinic, Bentiu IDP camp. © IOM 2021



## Overview

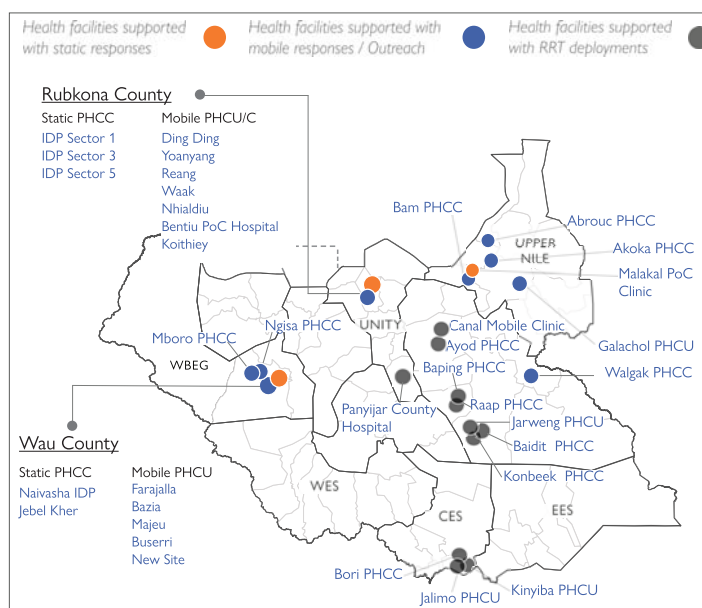
In the reporting period, IOM South Sudan's Migration Health Unit (MHU) continued with the provision of life saving health care services to vulnerable populations including IDPs, returnees, and flood affected communities in Upper Nile, Unity, Western Bahr El Ghazal and Jonglei states. IOM supported 24 health facilities through the provision of primary health care and routine immunization services in static and mobile/outreach intervention in Malakal, Rubkona, and Wau counties.

During the period October to December 2021, IOM MHU reached 236,959 beneficiaries.



Delivery of essential medical supplies to Akobo West during the 2021 flood emergency response © IOM 2021

## IOM Supported Health Facilities



PHCC - Primary Health Care Centre PHCU - Primary Health Care Unit Bentiu IDP Site S1- Bentiu IDP Site Sector 1 Bentiu IDP Site S3 - Bentiu IDP Site Sector 3 Bentiu IDP Site S5- Bentiu IDP Site Sector 5

## Disease Preparedness and Response Activities

### COVID-19 Response

As part of the response to the COVID-19 pandemic, IOM ensured that mitigation measures were in place to minimize the risk of transmission to clients at IOM facilities through enhanced patient education, temperature screening and triage at the IOM supported health facilities, ensuring that patients have access to disposable face masks and the provision of adequate handwashing facilities at the health care clinics. Additionally, IOM introduced COVID-19 testing at its static health facilities using the Rapid Antigen test kits, in accordance with WHO and Ministry of Health

guidelines. Clients who test positive are referred to the MSF hospital in Bentiu, Wau Teaching hospital in Wau and Malakal teaching hospital in Malakal for confirmatory PCR test while IOM health promoters continue to follow them up and to provide appropriate home-based care services and referral for hospital care for persons with worsening symptoms. This has been key in enhancing COVID-19 case detection among the IDP population and in providing additional support to persons who test positive for COVID-19.

### Enhancing Points of entry COVID-19 disease surveillance

IOM continued to support point of entry disease surveillance at the Nimule PoE where IOM is conducting COVID-19 screening of travellers at Nimule border land crossing. In this quarter, a total of 46,936 travellers (30,364 men, 11,966 women, 2,212 boys and 2393 girls) were screened for COVID-19.



IOM vaccinator providing COVID 19 vaccine in the IDP Camp in Rubkona © IOM 2021



Delivery of essential medical supplies by IOM Health Rapid Response Team to flood affected population in Panyijar county, Unity state © IOM 2021

### Hepatitis E outbreak response

IOM provided technical support to the development of the Bentiu Hepatitis E Response Strategy and continued to enhance both active and passive facility and community-based surveillance for hepatitis E through the identification of hepatitis E suspect cases and referral for testing and diagnosis at the MSF hospital in Bentiu. Through its team of health promoters, IOM has integrated hepatitis E prevention messages within routine health promotion activities to the IDP communities in the Bentiu IDP camp and within the new IDP sites A,B,C,D and E within Bentiu town during routine immunization outreach sessions to these locations.

### Oral cholera Vaccination campaigns:

IOM is currently supporting a planned targeted Oral cholera vaccination campaigns at 20 counties identified as hotspots and which are at risk of cholera outbreaks. IOM is the lead implementing partner for the planned campaign in Rubkona county. The team has supported the state ministry of health to develop a comprehensive microplan which has been approved at the National and sub-national level. The campaign dates are set for 24 to 28 January, in collaboration with WHO, UNICEF and partners in Rubkona county. IOM will also support a similar campaign in Malakal POC and Malakal town in the next quarter.

## Measles vaccination campaigns:

IOM deployed a rapid response team to conduct a five days preemptive measles vaccination campaign in Yambio and Nzara from 25 November to 1 December 2021 following a ministry of Health and WHO appeal for partner support for the implementation of the campaign. The campaign targetted children 6-59 months reaching a total of 45,404 (22,883 males and 22,521 females) children with an achieved coverage of 72 per cent. Additionally IOM

teams have been responding to the displaced population in the new displacement sites A,B,C,D and E and to populations cut off by the flood waters in Pakur and at the cattle camps in Thong and Rothriah in Unity state since August 2021 through weekly mobile clinic services to the various locations, reaching a total population of 126,784 individuals including 103,963men, 53,021 women,11,639 boys and 11,182 girls.



Training of Boma Health Workers in Twic East, Jonglei state © IOM 2021



Emergency Health response , Twic East 2021 © IOM 2021

## Flood Response in Unity, Jonglei and Upper Nile

During the quarter, as part of the health cluster response towards the provision of emergency health services to flood affected populations in Unity and Jonglei states, IOM deployed 3 rapid response missions to Ayod, Twic East and Panyijar reaching 84,027 beneficiaries including 19,474 males under five years, 20,254 females under five years, 21,299 males above 5 years and 23,000 females above five years of age. This brings the total of Rapid Response Missions (RRMs) undertaken by IOM emergency health teams to 8 out of the targetted 9 mission deployments. One additional team has been deployed to New Fangak in January 2022 to respond to the health emergency needs of flood affected population in New Fangak following media reports of a “strange disease” that had been reported to have resulted in high death rates in the area. Results of this mission will be reported in the next quarter.

Additionally IOM teams have been responding to the displaced population in the new displacement sites A,B,C,D and E and to populations cut off by the flood waters in Pakur and at the cattle camps in Thong and Rothriah in Unity state since August 2021 through weekly mobile clinic services to the various locations, reaching a total population of 126,784 individuals including 103,963men, 53,021 women,11,639 boys and 11,182 girls.

## Response to the Tambura Crisis.

IOM continued to support point of entry disease surveillance at the Nimule PoE where IOM is conducting COVID-19 screening of travellers at Nimule border land crossing. In this quarter, a total of 46,936 travellers (30,364 men, 11,966 women, 2,212 boys and 2393 girls) were screened for COVID-19.