

Overview

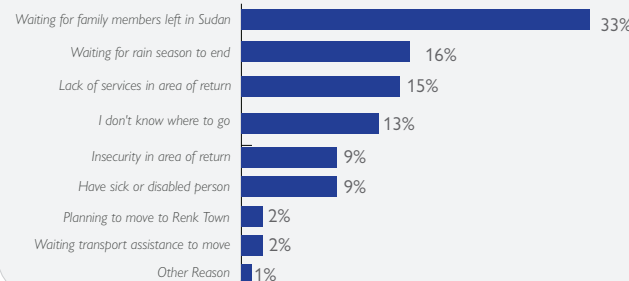
Since the fighting between the Sudanese Armed Forces (SAF) and paramilitary Rapid Support Forces (RSF) erupted in Khartoum and spread to other locations within the country, majority of South Sudanese returnees, Sudanese and other nationalities have crossed over into South Sudan through Wunthow (Juda) point of entry leading to opening of Renk TC. On 30 July 2023, IOM and partners conducted a rapid intention survey covering the whole population in Renk TC and its area adjacent. The partners included UNHCR, ACTED, ADA, NRC and HDC. The purpose of this exercise was to monitor the population dynamics and displacement trends in the center and to inform humanitarian response. A total of 7,691 individuals (1,285 households) were counted with 7,482 being South Sudanese (97%) while 209 were Sudanese. Data collected included movement intentions, preferred intended destination, and reasons for those that intend to remain at the transit center in the short term response.

Intentions of returnees

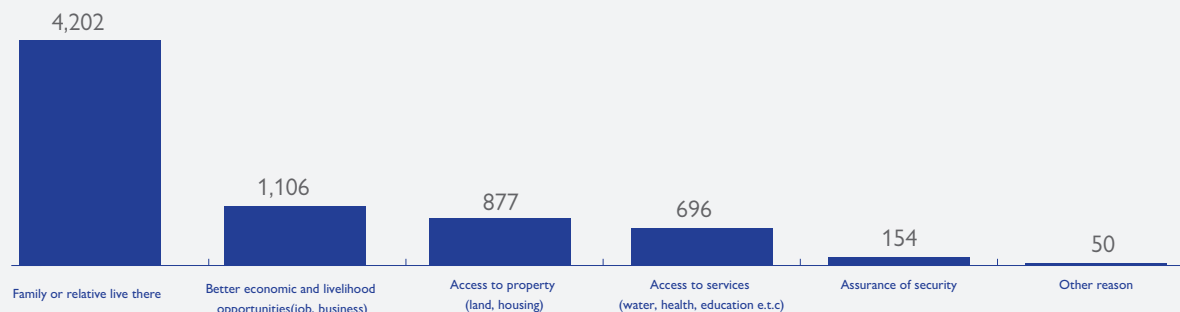
95% (7,085 individuals/ 1,139 households) of returnees intend to go to their areas of origin (87%) or other areas within South Sudan (7.8%)



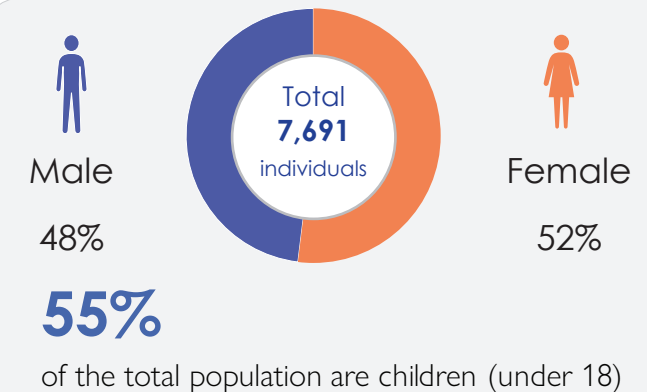
4.8% (360 individuals, 66 households) of South Sudanese intend to remain at the Renk TC for the short-term indicating these reasons



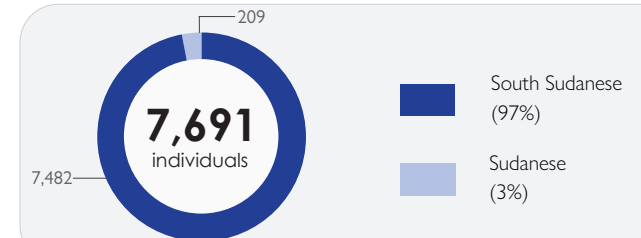
Main reason for choice of destination



Demography



Nationality of Renk TC population



Arrival to Transit Center



*Top 2 periods of arrivals for 7,482 South Sudanese nationals